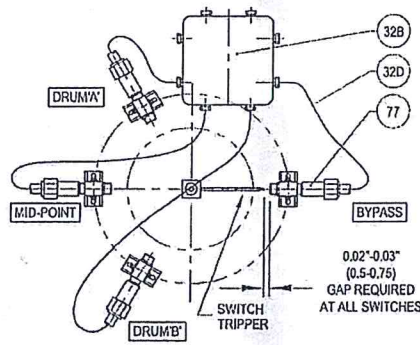
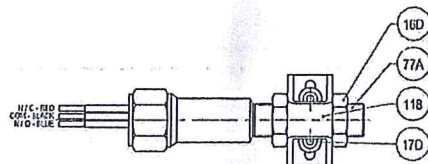


DETAIL 1
WIRING CONNECTIONS FOR PROXIMITY SWITCHES TO JUNCTION BOX TERMINAL STRIP



DETAIL 2
PLAN VIEW OF PROXIMITY SWITCHES



DETAIL 3
PLAN VIEW OF PROXIMITY SWITCH ASSEMBLY

AREA CLASSIFICATION TABLE		
PART	DESCRIPTION	AREA CLASSIFICATION
32A	ACTUATOR	EExd IIC T4, IP68
32B	JUNCTION BOX	EExd IIC T4

		MATERIAL LIST		
PART	DESCRIPTION	QTY	MATERIAL	REMARKS
1	BODY	1	C12	ALT: F9/A182
2	BONNET	1	F9	ASTM A182
5	STEM / BALL	1	CA6NM3 (CLASS A)	PLATED: HARD CHR
6	THRUST WASHER	1	CoCr	AMS 5387
9	SEAT	3	F9	ASTM A182
11	PACKING FLANGE	1	C12	ALT: F9/A182
12	GLAND BUSHING	1	C12	ALT: F9/A182
13A	PACKING RING (END)	2	BRAIDED GRAPHITE	
13B	PACKING RING (INT)	5	DIE-FORMED FLEXIBLE GRAPHITE	
14	LANTERN RING	1	C12	ALT: F9/A182
15A	STUD	18	GR B16	ASTM A193
15B	STUD	2	GR B16	ASTM A193
15C	STUD	4	GR B16	ASTM A193
16A	NUT	18	GR 4 / GR 7	ASTM A194
16B	NUT	2	GR 4 / GR 7	ASTM A194
16C	NUT	4	GR 4 / GR 7	ASTM A194
16D	NUT	8	SS	COMMERCIAL
17A	SOC HD CAP SCREW	24	ALLOY STEEL	ASTM A574
17B	SOC HD CAP SCREW	8	ALLOY STEEL	ASTM A574
17C	SOC HD CAP SCREW	2	ALLOY STEEL	ASTM A574
17D	SOC HD CAP SCREW	8	SS	COMMERCIAL
17E	SOC HD CAP SCREW	2	B8 / 304	ASTM F593
17K	SOC HD CAP SCREW	1	B8 / 304	ASTM F593
19A	GASKET	1	SS347/GRAPHITE	SPIRAL WOUND
19B	GASKET	3	SS347/GRAPHITE	SPIRAL WOUND
26A	KEY QTY 2 FOR 8" VALVE	1	CS	AISI 1018 CD
26B	KEY	1	CS	AISI 1018 CD
32A	ELECTRICAL ACTUATOR	1	ROTORC	MODEL: 1035B4-72 / MTW9R-24D
32B	JUNCTION BOX	1	ALUMINIUM	COMMERCIAL
32C	JUNCTION BOX BRACKET	1	SS 304	ASTM A240
32D	FLEXIBLE CONDUIT	SET	SS	COMMERCIAL
35	SET SCREW	2	ALLOY STEEL	ASTM A574
37A	OPER MTG PLATE	1	SS	ASTM A240
37B	STOP PLATE	1	GR 11	ASTM A387
37C	STOP POST	2	SS	ASTM A479
38A	SAFETY PIN	2	SS	ASTM A240
38B	SPRING PIN	1	SS	ASTM A240
4B	STOP PIN	2	SS	COMMERCIAL
53A	SPACER	1	SS	ASTM A240
53B	STOP PLATE SPACER	1	SS	ASTM A240
57A	WASHER	1	304	ASTM A240
57B	WASHER	1	304	ASTM A240
60A	BODY CAV PURGE FLG	1	F9	ASTM A182
68B	LANTERN RING PURGE FLG	1	F9	ASTM A182
68C	BELLOW O.D. PURGE FLG	3	F9	ASTM A182
68D	BELLOW I.D. PURGE FLG	3	F9	ASTM A182
73	INSERT	3	F9	ASTM A182
74	O-RING	1	NITRILE	
77A	PROXIMITY SWITCH	4	EURO SWITCH	MODEL: FS-B022

• USE LOCTITE® 272 HIGH TEMPERATURE, HIGH STRENGTH RED-ORANGE THREADLOCKER.

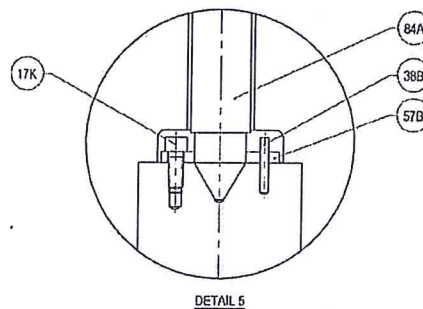
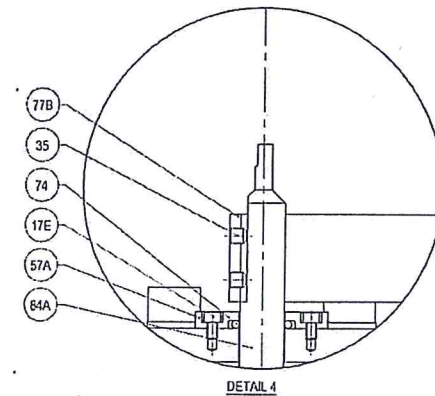
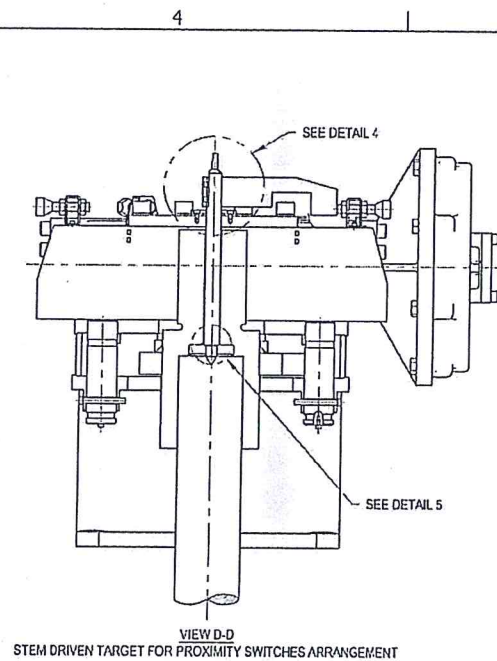
MATERIAL LIST CONTINUED ON NEXT SHEET



SCALE
NTS

DWG NUMBER

REV A
SHT 2 OF 4



MATERIAL LIST					
PART	DESCRIPTION	QTY	MATERIAL	MATL. SPEC.	REMARKS
77B	SWITCH TRIPPER	1	CS	ASTM A36 / 108	COLOR RED
78	BRACKET	1	SS 304	ASTM A240	
84A	INDICATOR ROD	1	304	ASTM A240 / 479	
89	BELLOWS SLEEVE	3	P9	ASTM A335	ALT: F9/A182
97	COUPLING	1	ALLOY STEEL	COMMERCIAL	clw RUST INHIB
102	BELLOWS	3	INCONEL 625	ASTM B443	
118	PROXIMITY SWITCH RACKET	4	SS 304	ASTM A240	
132A	BODY CAVITY PURGE	1	P9	ASTM A335	
132B	LANTERN RING PURGE	1	P9	ASTM A335	SEE NOTE 4
132C	BELLOW O.D. PURGE	3	P9	ASTM A335	
132D	BELLOW I.D. PURGE	3	P9	ASTM A335	
130	PURGE GUSSET	16	GR 9 / F9	ASTM A387 / A182	2 PER PURGE ALT: GR 91 / A387

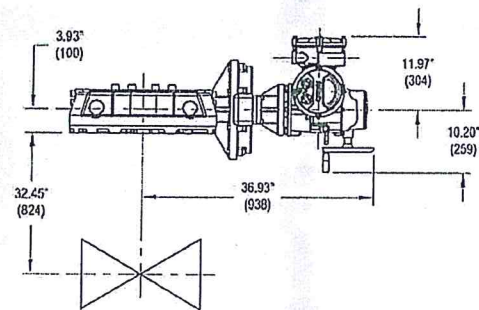
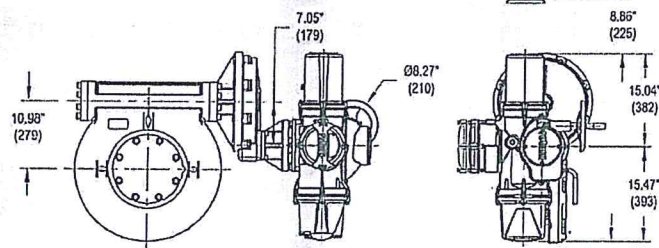
• USE LOCTITE® 272 HIGH TEMPERATURE, HIGH STRENGTH RED-ORANGE THREADLOCKER.



SCALE
NTS

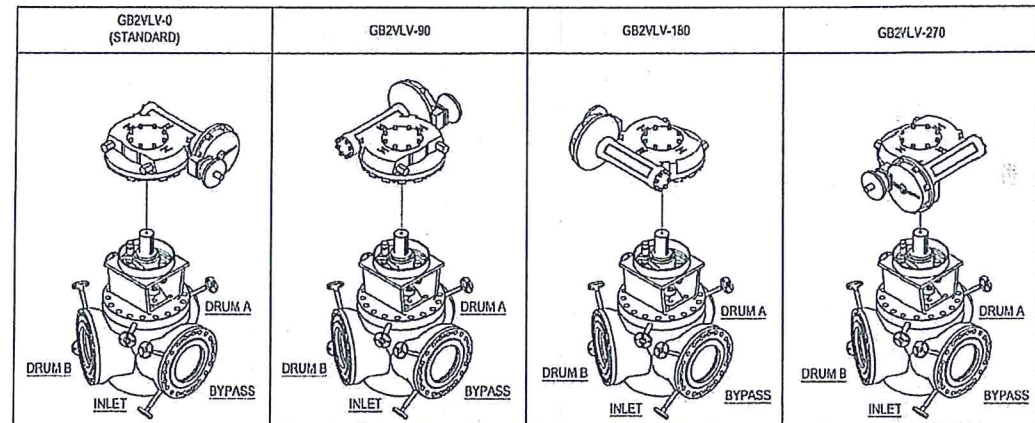
DWG NUMBER

REV A
SHT 3 OF 4

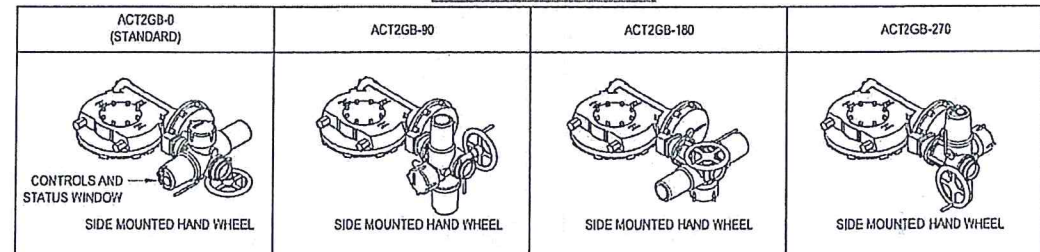


ACTUATOR OUTLINE DIMENSIONS

GEARBOX TO VALVE ORIENTATION



ACTUATOR TO GEARBOX ORIENTATION



ACTUATOR ORIENTATION TABLE	
GEARBOX TO VALVE ORIENTATION	ACTUATOR TO GEARBOX ORIENTATION
GB2VLV-0	ACT2GB-0

CUSTOMER TO ADVISE CODES FOR THEIR DESIRED ACTUATOR ORIENTATION



SCALE
NTS

DWG NUMBER

REV A
SHT 4 OF 4